

Density = 96.33 lbs/cubic foot

APRIL 99

PANEL 12

4,540' X 772.75' X 7.98'

364,531 TONS

Density = 97.62 lbs/cubic foot

SECTION 35

2ND WEST
2ND WEST

Alvies good
foot good
the north side
to Vols 1-6 yield
17-18-19-20
17-18-19-20-21
17-18-19-20-21-22
17-18-19-20-21-22-23
17-18-19-20-21-22-23-24
17-18-19-20-21-22-23-24-25
17-18-19-20-21-22-23-24-25-26
17-18-19-20-21-22-23-24-25-26-27
17-18-19-20-21-22-23-24-25-26-27-28
17-18-19-20-21-22-23-24-25-26-27-28-29
17-18-19-20-21-22-23-24-25-26-27-28-29-30
the above
3rd rd
more rich
spot
at top
400'
1ST WEST

MAY 99

JUN 99

1ST WEST

DUE WEST

MAIN WEST

SEALED 6/17/99

SEALED

SEALED 6/17/99

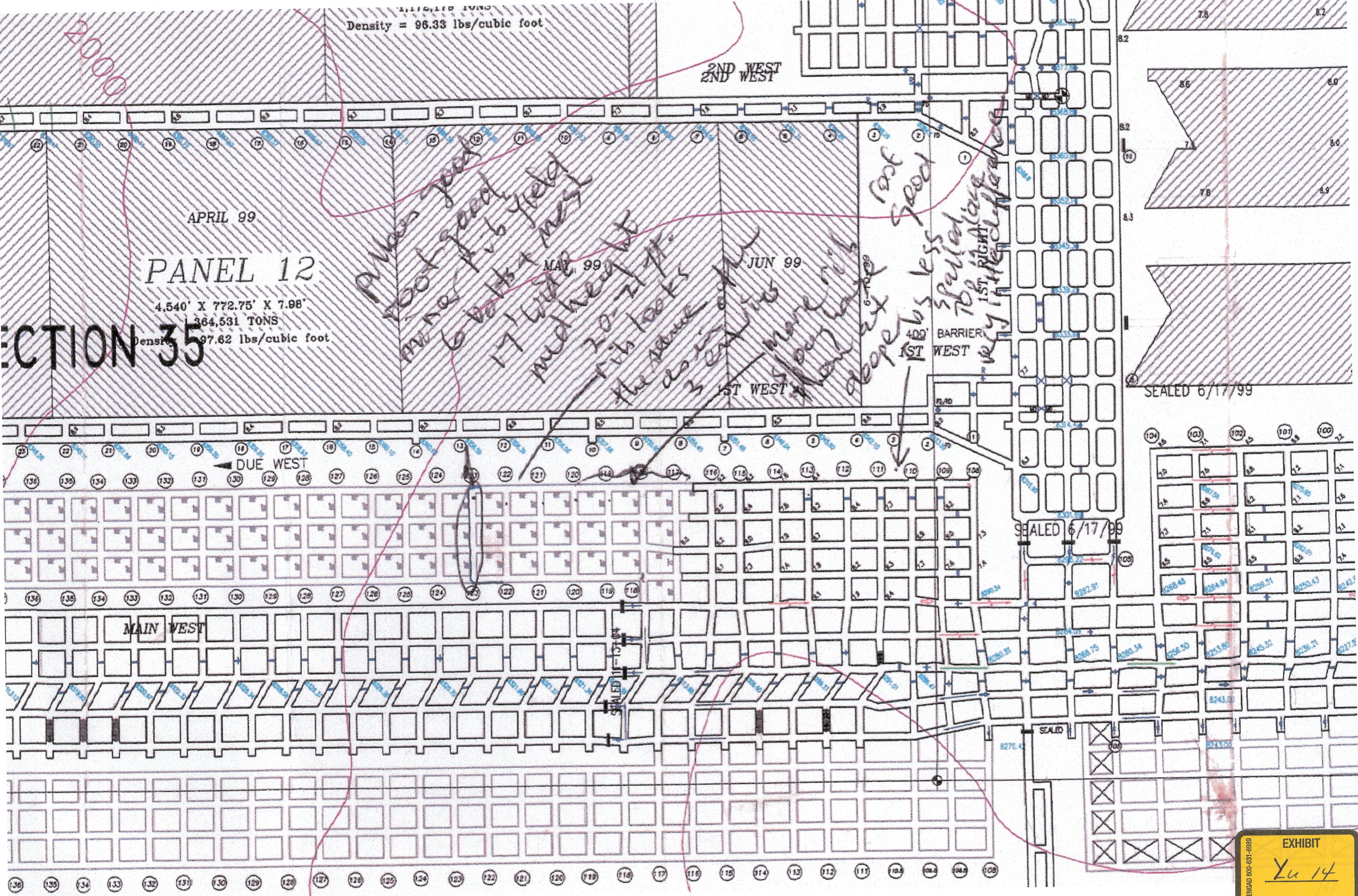
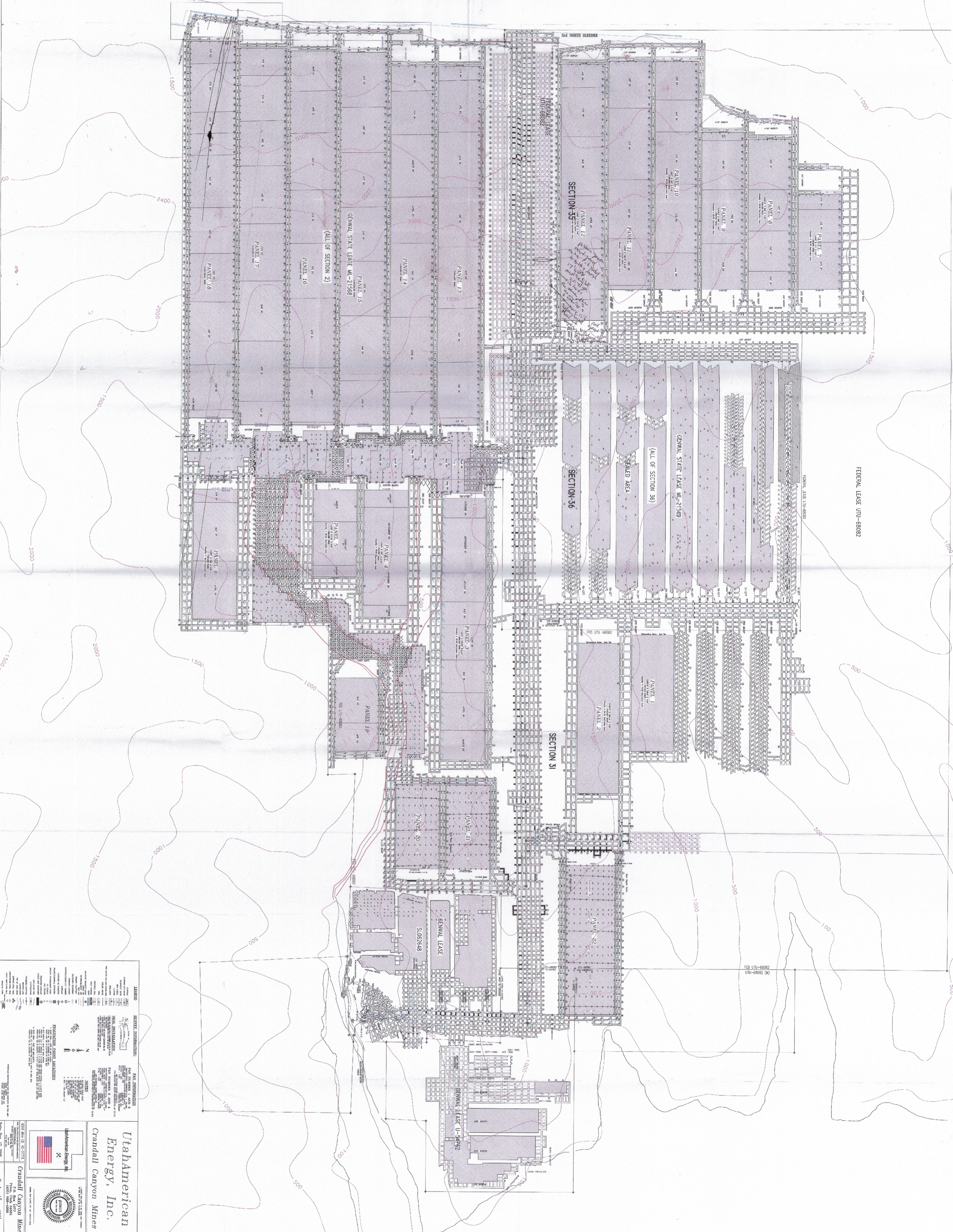


EXHIBIT
Yu 14

PERGAD 000-631-6889

JOES VALLEY FAULT

(USGS PROJECTED)



LEGEND

GENERAL INFORMATION

PROPERTY INFORMATION

ENVIRONMENTAL INFORMATION

REGULATORY INFORMATION

OTHER INFORMATION

UTAHAMERICAN ENERGY, INC.
Crandall Canyon Mines

Utah American Energy, Inc.
Crandall Canyon Mine
Date: Nov. 17, 2008
Scale: 1" = 400'

Image is Not to Scale Rev. 9-26-2007